

# Instruction Sheet

**Subject: 8263497 Fresh/Waste Bulk Oil Kit  
 Installation Instructions (Gas)**

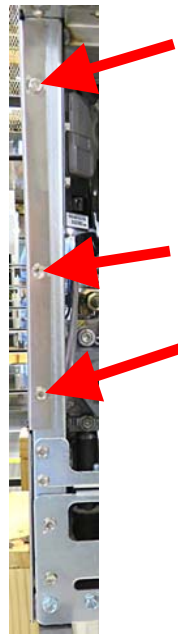
**Models affected: FilterQuick Touch FQG30-T Gas Fryers**

**Follow these instructions to install the Bulk Oil Kits (Fresh and Waste).**

1. Disconnect power and gas from the fryer.
2. Remove the fryer from the hood to gain access to the rear of the fryer.
3. Remove the sides by removing the doors first. Remove the door by pushing up on the lower hinge pin, with a screwdriver or similar object until the door can be removed (see Figure 1).
4. Loosen the three (3) screws on the front of the side (see Figure 2).
5. Loosen the screw from the center bottom of the side (see Figure 3).
6. Loosen the four (4) screws on the lower rear back and the four (4) lower screws on the upper rear back (see Figure 4).



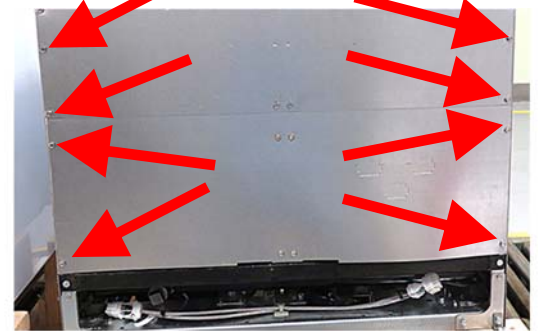
**Figure 1**



**Figure 2**



**Figure 3**



**Figure 4**

## In This Kit

Part #	Description	Qty
1080686	HANDLE & LOCK ASSY, GAS LOV RTI	1
1085398	HARNESS, UNIVERSAL BULK OIL	1
1085785	FILL ASSY, FLT QCK BULK OIL	1
1085907	PLUMBING, FQ GAS BULK OIL	1
1087707	DISPOSE ASSY, FQGLA BULK OIL	1
1083391	INLET ASSY, GL ATO PUMP	1
1085789	PLMB, FQ30 GAS BULK OIL FRESH	1
8022608	TAG, FILL RTI	1
8022609	TAG, DISPOSE RTI	1
8130331	ELBOW, 1/2NPT W/SIDE OUTLET BM	1
8130298	NPPL, 1/2NPT X 2.00 BM	1
8130087	NPPL, 1/2NPT X 1 1/2 BM	1
8130062	ELBOW, 1/2 90DEG BM	2
8101668	ADAPTER, MALE 5/8" O.D. X 1/2"	3
8130003	TEE, 1/2NPT BM	1
8103738	ADAPTER, CHECK VALVE CLOSE NPL	2
8090256	NUT, KEPS 10-32 HX ZP	4
8091070	BOLT, 1/4-20 X 5/8 SQ CONE LOCK	6
8090417	NUT, FLNG 1/4-20 SERR	8
8101057	FLEXLINE, 5/8" X 13.00" LONG	1
8090412	SCRW, #10-1/2 HX WSHR HD N	6
8238991	WRENCH W/A, 1-1/16" CRWS F	1
8140015	TY WRAP	8
8160870	CLAMP, .870/.732 SNAP GRIP HOSE	1
8072469	BUSHING, HEYCO 1" I.D. SB1250-16	1
8076105	HARNESS, DISPOSE/PAN SW/BULK	1
8197527	INSTRUCTIONS	1

7. Lift upward on the side to remove (see Figure 5). Repeat for other side.



Figure 5

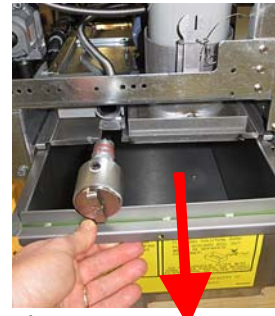


Figure 6

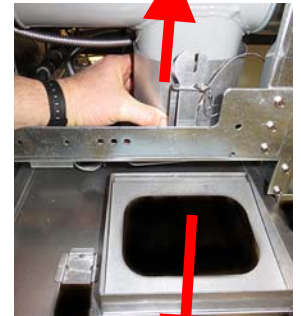


Figure 7

8. Remove the filter pan (see Figure 6).

9. Remove the filter pan lid by lifting up on the collar, around the drain tube, while pulling on the filter pan lid (see Figure 7).

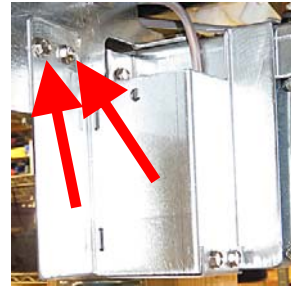


Figure 8

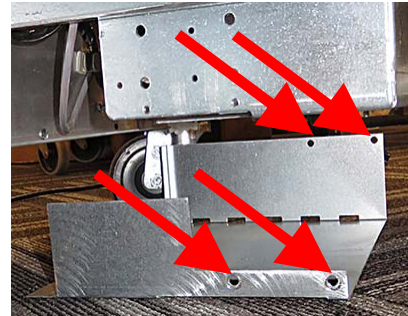


Figure 9



Figure 10

10. Remove the splash shield on the left side of the transformer box, as viewed from the front of the fryer, by removing the two (2) screws connecting the shield to the frame (see Figure 8).

11. Remove the splash shield on the right side of the transformer box, by removing the two (2) screws on the rear and the two (2) screws on the front (see Figure 9).

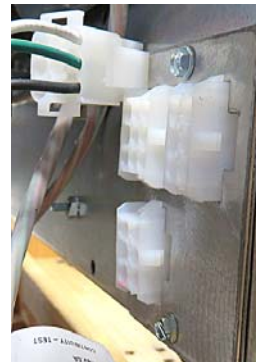


Figure 11



Figure 12

12. Disconnect all connectors on both sides of the front of the transformer box (see Figures 10 and 11).



Figure 13

13. Remove the two (2) vinyl caps from the studs of the transformer box (see Figure 12).



Figure 14

14. Using a 7/16" inch wrench, remove the nuts securing the transformer box. Lower and set aside (see Figure 13).

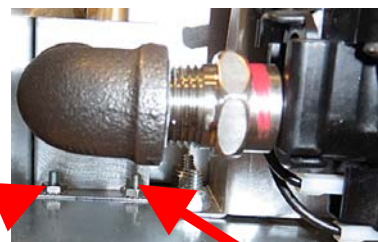
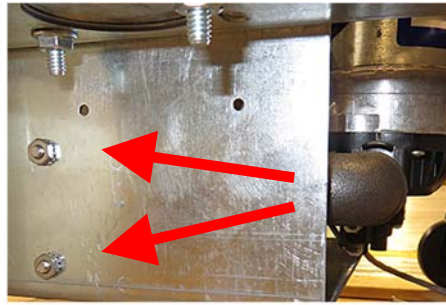


Figure 15

15. Remove the lower back by removing the eight (8) screws (see Figure 14).

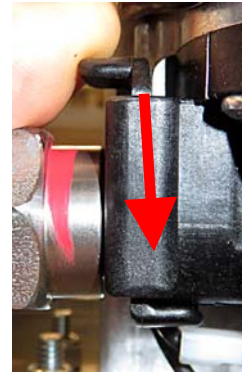
16. Locate the inlet plumbing on the left side of the ATO pump, as viewed from the rear of the fryer. Using a 3/8" nut driver, remove the two (2) nuts attaching the inlet hose bracket (see Figure 15).

17. Remove the two (2) nuts on the outside left of the ATO tray, as viewed from the rear (see Figure 16).

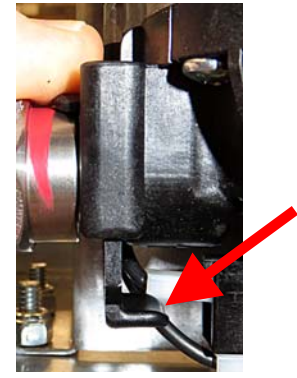


**Figure 16**

18. On the inlet side of the ATO pump, push down on the quick disconnect lock clip to unlock the fitting (see Figures 17 and 18).

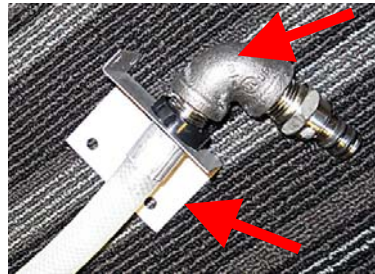


**Figure 17**



**Figure 18**

19. Remove the ATO inlet assembly from the ATO pump. Remove the elbow with the quick disconnect fitting and the bracket from the hose. Save the hose with the cap and suction foot for use later (see Figure 19).



**Figure 19**

20. Disconnect the flex line, that runs between the ATO pump and oil manifold, at the check valve (see Figure 20).



**Figure 20**



**Figure 21**

21. Remove the check valve with fitting (see Figure 21). Set aside, as they will be used later.

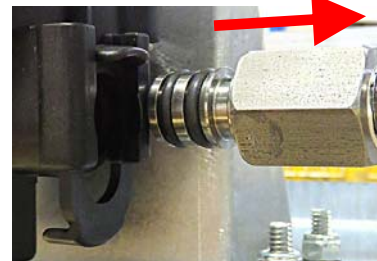
22. Remove the elbow and check valve nipple. It may require removing the adjacent flexline, to remove elbow (see Figure 22).



**Figure 22**



**Figure 23**



**Figure 24**

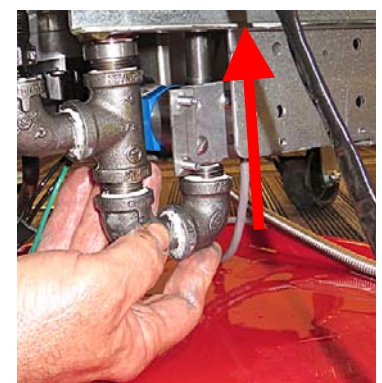


**Figure 25**

23. It may be necessary to disconnect the filter pan switch and move any additional wires out of the way, to allow additional room to work.

24. On the outlet side of the ATO pump, push down on the quick disconnect lock clip, to unlock the fitting and remove the flexline assembly (see Figures 23 and 24).

25. Apply Loctite to the threads of the JIB hose and attach the JIB hose from step 19 to the 1085789 assembly (see Figure 25).



**Figure 26**

26. Insert the assembly from the previous step through the bottom of the ATO pump tray, ensuring the flexlines and JIB hose are inserted first (see Figure 26).

27. Route the JIB hose over the FIB (ATO) box towards the front of the fryer (see Figure 27).

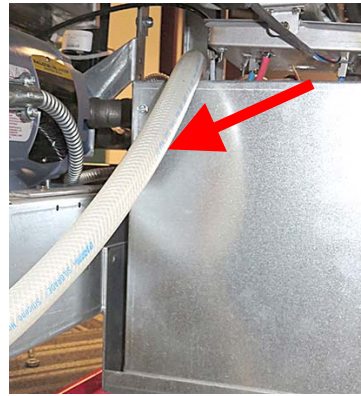


Figure 27

28. Once in place, insert the four (4) studs through the four (4) holes in the plate and attach with supplied nuts (see Figures 28 and 29).

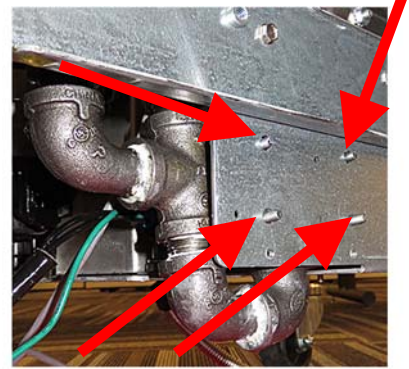


Figure 28

29. Attach inlet assembly flexline (1083391) to the reducing tee, behind the top off pump (see Figure 30) and tighten.

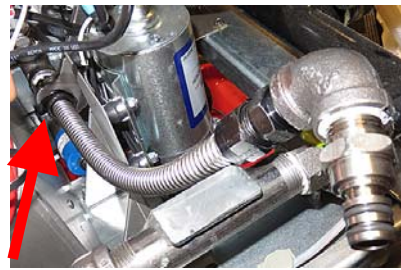


Figure 30

30. Route the flexline behind the top off pump and around the side.



Figure 29

Insert the quick disconnect into the inlet side of the top off pump. Ensure the lock clip is pushed up and fitting is secure (see Figure 31 and 32).

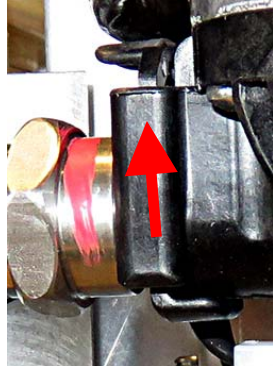


Figure 32

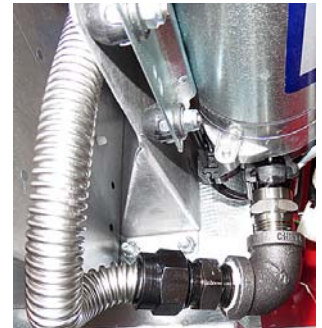


Figure 31

31. Disconnect the flexline from the check valve, connecting the oil manifold to the filter pump (see Figure 33).

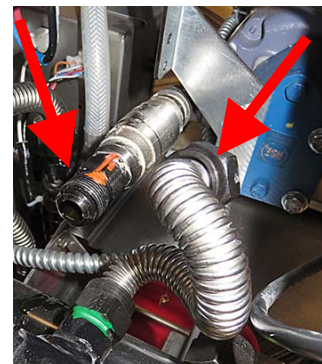


Figure 33

32. Use a 7/16" wrench to remove the nut and bolt from the filter pump shipping bracket (see Figure 34).

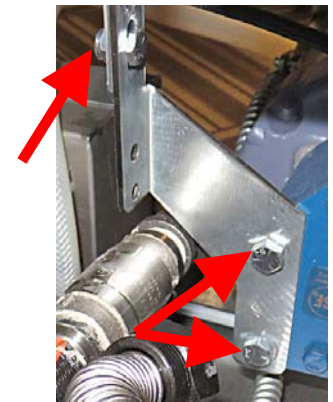


Figure 34

33. Use a 1/2" wrench to remove the two (2) bolts securing the filter pump bracket to the filter pump (see Figure 34). Discard the bracket.

34. Reinsert the two (2) bolts into the filter pump and tighten. Torque to 15 foot lbs. Do **NOT** overtighten.

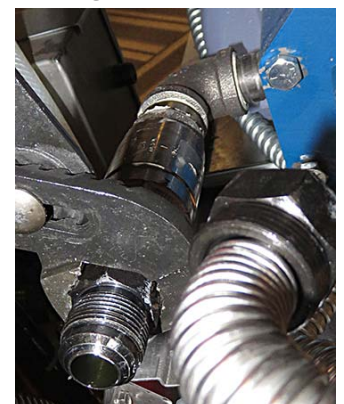


Figure 35

35. Remove the flexline adaptor and check valve from the filter pump (see Figure 35).

36. Remove the check valve fittings and the 90° elbow from the filter pump (see Figures 36 and 37). It may be necessary to loosen all four (4) filter pump bolts, to ease removal of the elbow and check valve fittings. When finished, retighten the bolts, but do **NOT** overtighten.
37. Apply Loctite and insert 1½" nipple (8130087) into the 90° elbow with outlet (8130331) and tighten and orient as shown (see Figure 38).



Figure 36

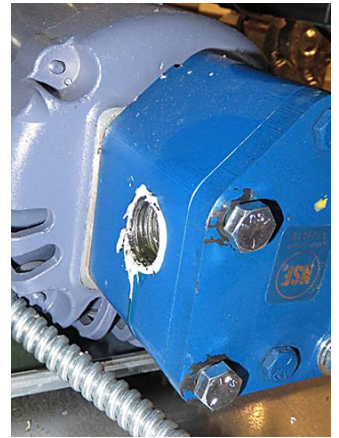


Figure 37

38. Apply Loctite to both ends of the 2" nipple (8130298). Insert the nipple into the top of the elbow, attached to the pump, in previous step (see Figure 39).

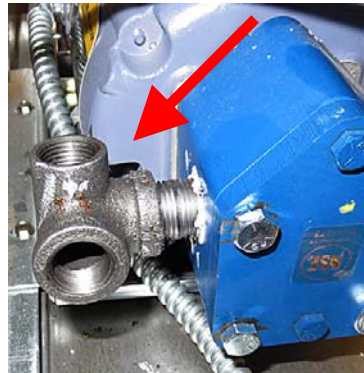


Figure 38

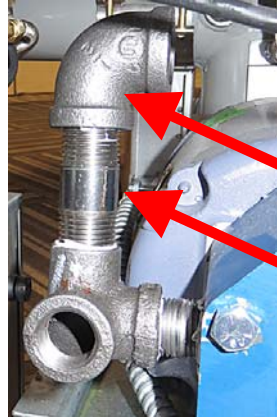


Figure 39

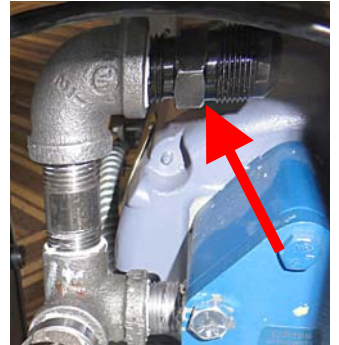


Figure 40

39. Attach the 90° elbow (8130062) to the top of the nipple in the previous step. Tighten and orient as shown (see Figure 39).
40. Attach flexline adaptor (8101668) to elbow in previous step and orient as shown (see Figure 40).
41. Attach the check valve fittings, check valve, and flexline adaptor, removed in steps 35 and 36, to the bottom opening of the elbow as shown (see Figure 41).
42. Reattach the flexline disconnected in step 31 (see Figure 42).



Figure 41

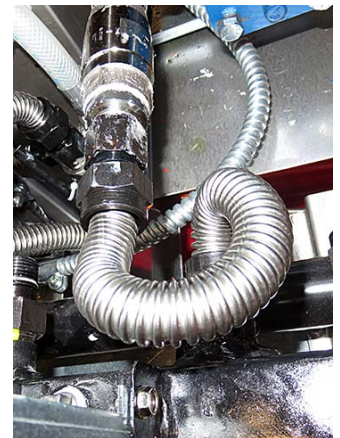


Figure 42

43. Locate the 1085907 Bulk Oil plumbing assembly. Facing the switch connectors, attach the 8076105 harness to the Bulk Oil Plumbing assembly. Beginning with the switch on the left, attach the red wire to the farthest left connector; next attach the green wire, to the connector directly to the right of the red. On the right switch, attach the black wire to the farthest right connector; attach the white wire to the connector left of the black wire (see Figure 43).

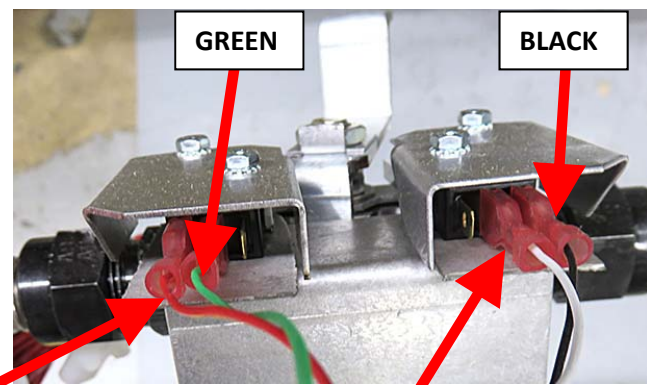
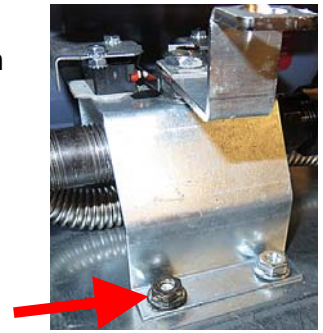


Figure 43

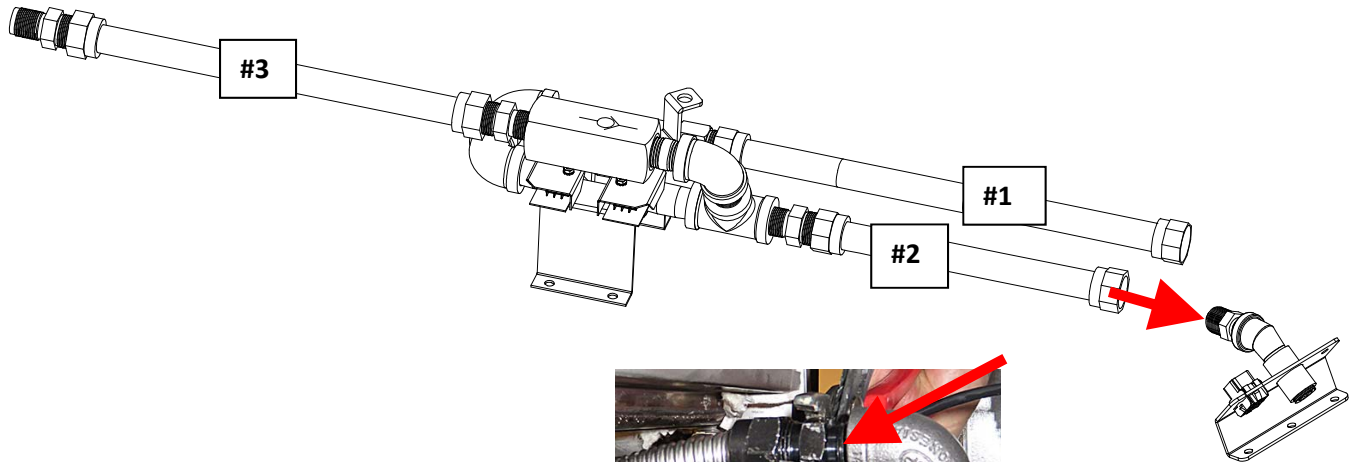
RED

WHITE

44. With the dispose valve handle oriented away from the filter pump, insert the bulk oil plumbing assembly into the cabinet. Ensure the flexline running from the pick up tube to the filter pump, is beneath the bracket of the the plumbing assembly.
45. Using a 7/16" wrench, attach the switch assembly to the four studs on the filter pump mounting plate using 4 - 1/4"-20 nuts (see Figure 44).
46. Using Figure 45 below as a guide, route the flexline #1 over the pump and attach to the outlet of the filter pump (see Figure 46).

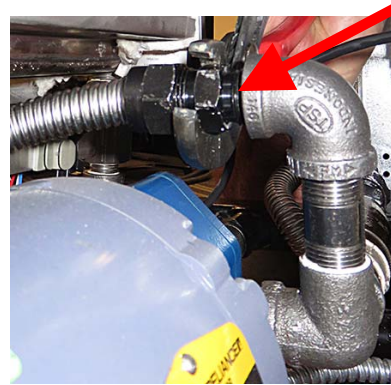


**Figure 44**

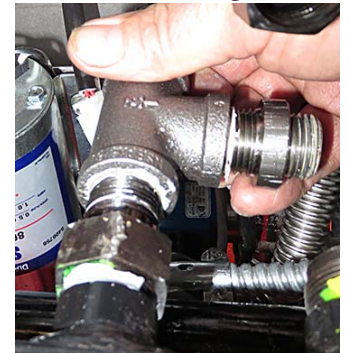


**Figure 45**

47. Attach the 8130003 "T", 8101668 adaptor and check valve nipple removed in step 22 to the adaptor that was left attached to the oil manifold in step 22 (see Figures 47 and 48).

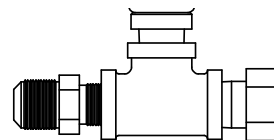


**Figure 46**



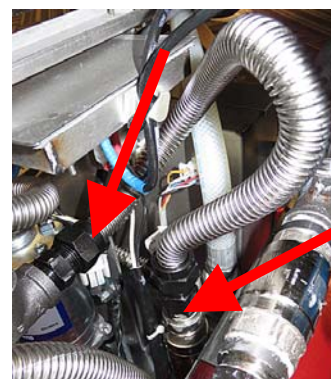
**Figure 47**

48. Attach flexline 8101057 to flexline adaptor in Figure 48 and the other end to the assembly below it (see Figure 49).



**Figure 48**

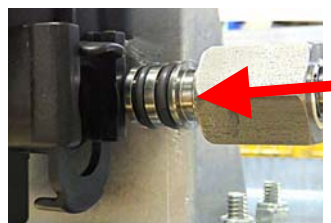
49. Using the check valve and top fitting removed in step 21 to assemble as shown (see Figure 50).
50. Reinsert fitting attached to flexline, removed in step 24, into the ATO pump (see Figure 51).



**Figure 49**



**Figure 50**



**Figure 51**

51. Once the quick disconnect fitting is fully engaged, push the lock up (see Figure 52).



Figure 52

52. Attach other end of flexline to the top of the fitting (see Figure 53).

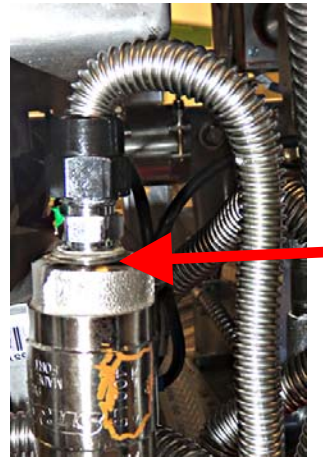


Figure 53

53. Remove far right nut and bolt, as viewed from the rear of the fryer, attaching the return oil manifold to the frame (see Figure 54).



Figure 54

54. Using a prybar, lift the oil manifold up slightly to allow the oil dispose assembly 1087707 to slide in between the gas and oil manifolds (see Figure 55).

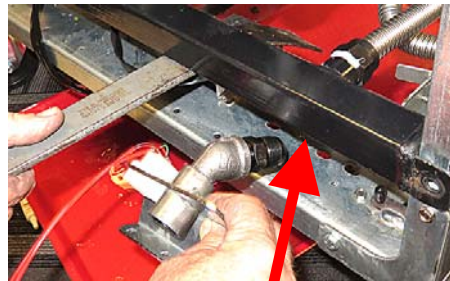


Figure 55

55. Attach the flexline #2 from the dispose switch assembly in Figure 45, to the dispose outlet assembly (see Figure 56).



Figure 56

56. Detach the electrical connector from the dispose assembly. Position over the pre-drilled holes (see Figure 57).

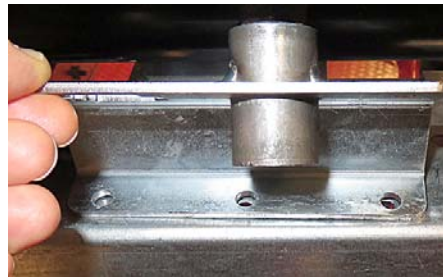


Figure 57

57. Replace the bolt and nut removed in step 53.

58. Position the fresh oil fill assembly 1085785 to the far left of the fryer, as viewed from the rear. Position the assembly between the oil manifold and the gas manifold. Route the flexline around the ATO pump and attach the fresh flexline from the assembly to the right of the ATO pump to the fresh oil fill assembly (see Figures 58 and 59).

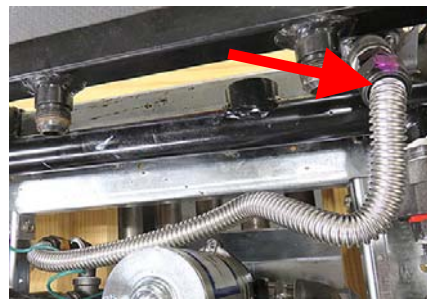


Figure 58

59. Align the fresh oil fill assembly to the pre-drilled holes and attach using 1/4"-20 bolts (see Figure 60).

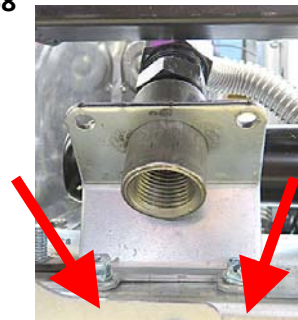


Figure 60

60. Unplug the 12-pin connector from the rear of the FIB (ATO) box (see Figure 61).



Figure 59

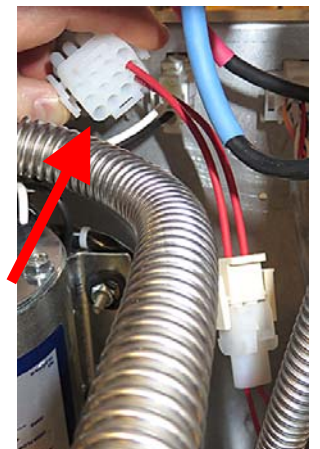


Figure 61

61. Locate the 8076105 wire harness. If the revision on the harness is revision A or B proceed to the next step. If the revision is C or later, skip to step 68 (see Figure 62).



Figure 62

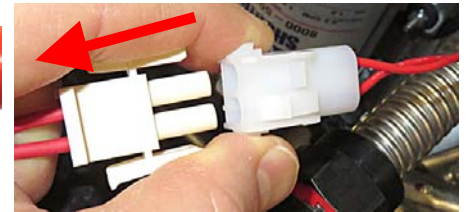


Figure 63

62. Unplug the 2-pin connector on the other end of the 12-pin connector in previous step (see Figure 63).

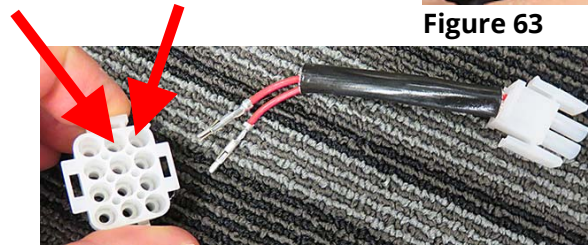


Figure 64

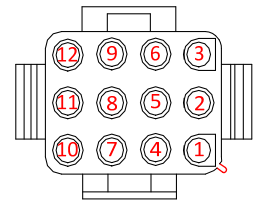


Figure 65  
Viewed from the Rear

63. Using a pin pusher push pins 1 and 2 out of the 12-pin connector and set aside for later use (see Figure 64).

64. Using a pin pusher, push pins 1 (black) and 2 (red) out of the new 12-pin connector on the 8076105 harness and discard (see Figures 65 and 66). Pin 1 is located

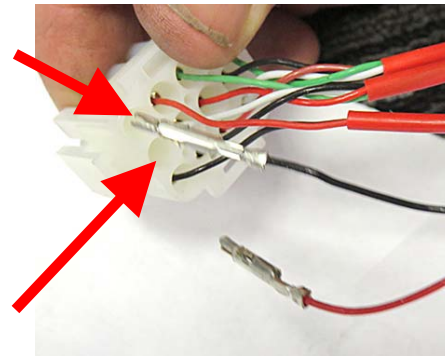


Figure 66

by looking for the protruding ridge which is adjacent to Pin 1.

65. Using the 2-pin connector removed in step 63, insert the pins into positions 1 and 2 of the 12-pin connector in step 64 (see Figure 67).



Figure 67

66. If using Revision A 8076105 harness, remove pins 3 (red) & 4 (black) out of 12-pin connector (see Figure 68).

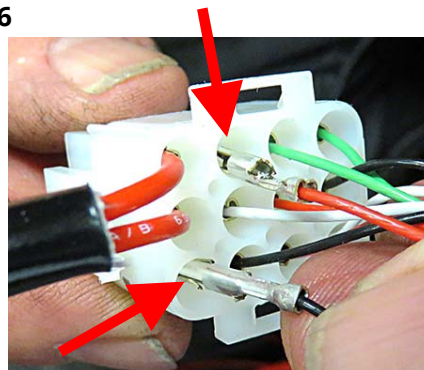


Figure 68

67. On the opposite end of the wires that were removed in the previous step, push the correlating pins 5 and 6, out of the 9-pin connector (see Figure 69) and discard the wires.

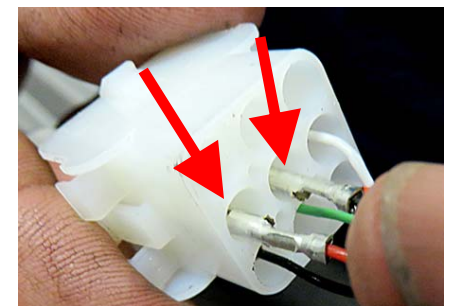


Figure 69

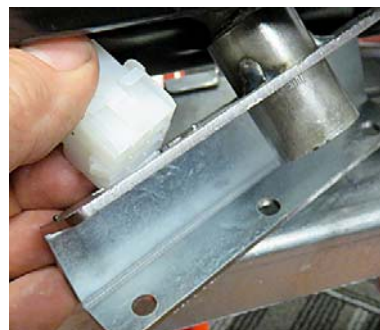


Figure 70

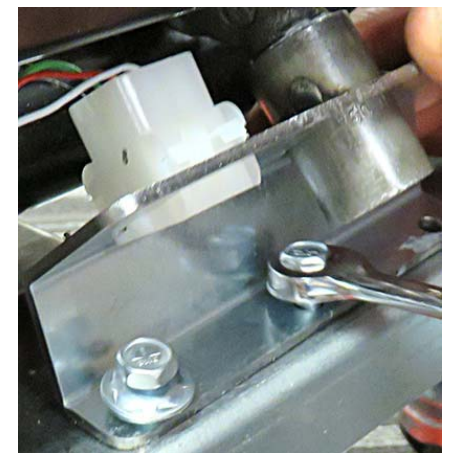


Figure 71

68. Insert the 9-pin female connector into the dispose assembly (see Figure 70).

69. Align the dispose outlet assembly to the pre-drilled holes and attach using 1/4"-20 self tapping bolts (see Figure 71).



70. Attach the 1085398 9-pin male connector to the female connector (see Figure 72).

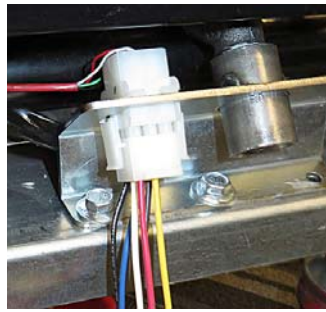


Figure 72

71. Locate the two-wire harness from the fresh oil assembly solenoid, behind the ATO pump. Route under the gas manifold. Push the pins out of the 2-pin connector (see Figure 73).



Figure 73

72. Insert the two black wires removed from the 2-pin connector in the previous step into positions 3 and 4 of the 12-pin connector in step 68 (see Figures 65 and 74).

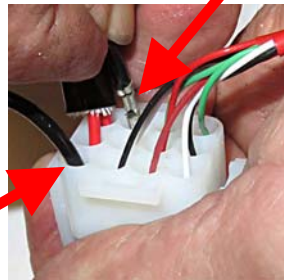


Figure 74

73. Connect the 12-pin connector to the rear of the FIB (ATO) box (see Figure 75).

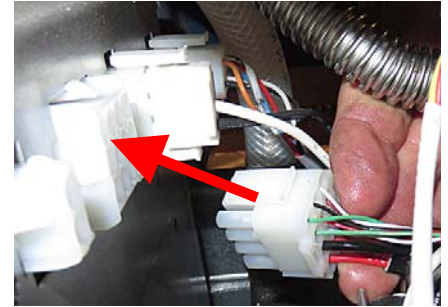


Figure 75

74. Zip tie excess wiring to gas manifold (see Figure 76). Do **NOT** tie wires to the oil return manifold.



Figure 76

75. Attach green ground wire from solenoid to the underside of the assembly (see Figure 77).

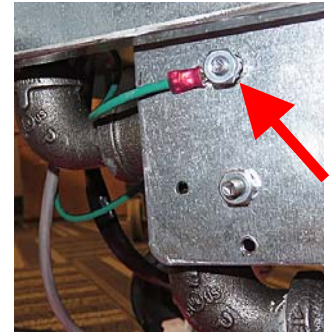


Figure 77

76. Using zip ties, attach (FILL) tag to the fresh oil port on the left side of the fryer, as viewed from the rear (see Figure 78).



Figure 78

77. Using zip ties, attach (DISPOSE) tag to the waste oil port on the right side of the fryer, as viewed from the rear (see Figure 79).



Figure 79

78. Remove the plug from the rear of the drain tube (see Figure 80).

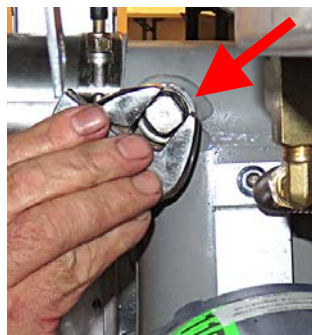


Figure 80

79. Insert flexline adaptor 8101068 into the port in the rear of the drain tube and tighten (see Figure 81).



Figure 81



Figure 82

80. Attach the #3 flexline (see Figure 45) from the check valve to connector attached to the drain tube in the previous step (see Figure 82).

81. Attach the dispose handle assembly 1080686 to the dispose switch valve assembly with the clevis clip (see Figure 83).

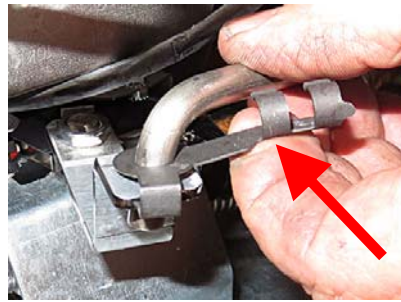


Figure 83

82. Attach the dispose valve bracket to the frame (see Figure 84).

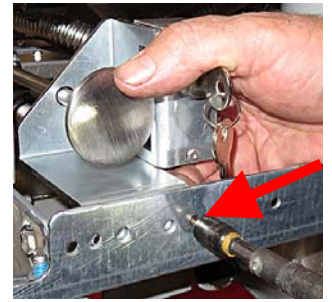



Figure 84

83. On the rear of the fryer remove the plugs and connect the fresh oil hose to the FILL port and the waste oil hose to the DISPOSE port.

84. Use the wiring diagram on the back page for reference when attaching any wiring from an external bulk system. Connect the wiring to the harness next to the DISPOSE connector, on the rear of the fryer (see Figure 72).

85. Reverse steps 1-15 to return the fryer to operation.

86. Once fryer has powered up, wait one (1) additional minute with the controller OFF and press the HOME button. 

87. Press the SETTINGS button. 

88. Press the SERVICE button. 

89. Enter **3000**.

90. Press the √ (check) button.

91. Press the down arrow button one time. 

92. Press OIL SYSTEM TYPE if adding bulk fresh oil.

93. Press BULK.

94. Press the √ (check) button.

95. Press WASTE OIL if connecting to bulk waste oil system.

96. Press BULK.

97. Press the √ (check) button.

98. Press the HOME button to exit. 

99. Press and **HOLD** the momentary reset switch. Ensure the switch is pressed and held for **one (1) minute**. On some gas units, the button may be located under the far-left control box. On newer gas and units, the switch is located close to the USB port.



Figure 85

100. Once the fryer is rebooted press and **HOLD** the **ORANGE JIB** reset button to fill the container with fresh oil until the container is full. Once full release the button (see Figures 85 and 86). **NOTE:** It takes approximately twelve seconds from the time the top off reset button is pressed, until the bulk fresh oil pump starts. It may take up to 20 seconds before the level of the oil in the top off reservoir begins to rise. Typically, it takes approximately three minutes to fill the reservoir. It takes approximately one minute to fill a split vat and two minutes to fill a full vat.



Figure 86

101. Test the dispose function by pressing the FILTER button .

102. Select DISPOSE from the menu.

103. The controller displays DISPOSE NOW? YES NO.

104. Press the YES button.

105. The controller displays WEAR PROTECTIVE GLOVES; YES.

106. Press the YES button.

107. Press the BLUE button.

108. Controller displays VAT EMPTY?

109. Press the YES button.

110. Controller displays CLEAN VAT COMPLETE?

111. Press the YES button.

112. Controller displays ALERT DRAIN CLOSING REMOVE TOOLS changing to OPEN DISPOSE VALVE.

113. Open the dispose valve by pulling the handle towards the front of the fryer (see Figure 87).

114. Ensure that the filter pump starts and begins pumping oil out of the filter pan. If so, immediately push dispose handle in to stop the pump. Reboot the fryer system. Once the system is rebooted and all prompts are correctly answered, press the FILTER button and select the FILL VAT FROM PAN option to return the oil to the vat. Ensure that the oil is returned. It may be necessary to top off the vat when finished for the vat to heat properly.



**Figure 87**

# BULK OIL WIRING

FIB BOX  
C7

